

PRODUCT SHIPPING LATE 2008

# Epson Stylus® Pro 7900 / 9900 Series

PRODUCT FEATURE SET HIGHLIGHTS



EPSON STYLUS PRO 9900 PRINTER SHOWN ABOVE

PRINTERS SHIPS WITH PRINTER STAND,  
MEDIA CATCH BIN, AND 110 ML  
STARTER INK CARTRIDGES.

EPSON STYLUS PRO 7900 – 24"      \$3,995

EPSON STYLUS PRO 9900 – 44"      \$5,995

CONTACT YOUR LOCAL RESELLER FOR THE LATEST PRICING INFORMATION.  
(PRICING SHOWN IS MSRP)

- NEW** Epson UltraChrome® HDR Ink Technology
- NEW** Ten-Channel Epson MicroPiezo TFP™ Print Head
- NEW** Eleven Individual High-Capacity Ink Cartridges – up to 700 ml
- NEW** Automatic Black Ink Mode Switching
- Handles Roll or Cut-Sheet Media from Letter up to 44" wide
- NEW** Epson ePlaten™ Media Loading Technology
- NEW** Spindle-Free Roll Media Loading
- NEW** Roll Media Length Tracking & Identification System
- BorderFree® Roll Printing from 10-Inch up to 44-Inch Wide
- Accepts Media up to 1.5 mm Thick Poster board
- NEW** Built-in Automatic Rotary Media Cutting System
- Maximum Resolution of 2880 x 1440 dpi at 3.5 Picoliter
- NEW** Epson AccuPhoto™ HDR Screening Technology
- Pressurized Ink Cartridge Technology
- NEW** Automatic Nozzle Verification Technology
- Automatic Head Alignment & Cleaning Systems
- Standard USB 2.0 & 10/100 BaseT Ethernet
- NEW** Large 2.5-Inch Color LCD Control Panel
- Epson PreciseColor™ Manufacturing Process
- NEW** myEpsonPrinter.com Compatible
- NEW** Optional Epson SpectroProofer™ Spectrophotometer
- NEW** New Low Noise Design for Extremely Quiet Operation
- One-Year Epson Preferred<sup>SM</sup> Protection Plan

EPSON



24"

## Epson Stylus Pro 7900

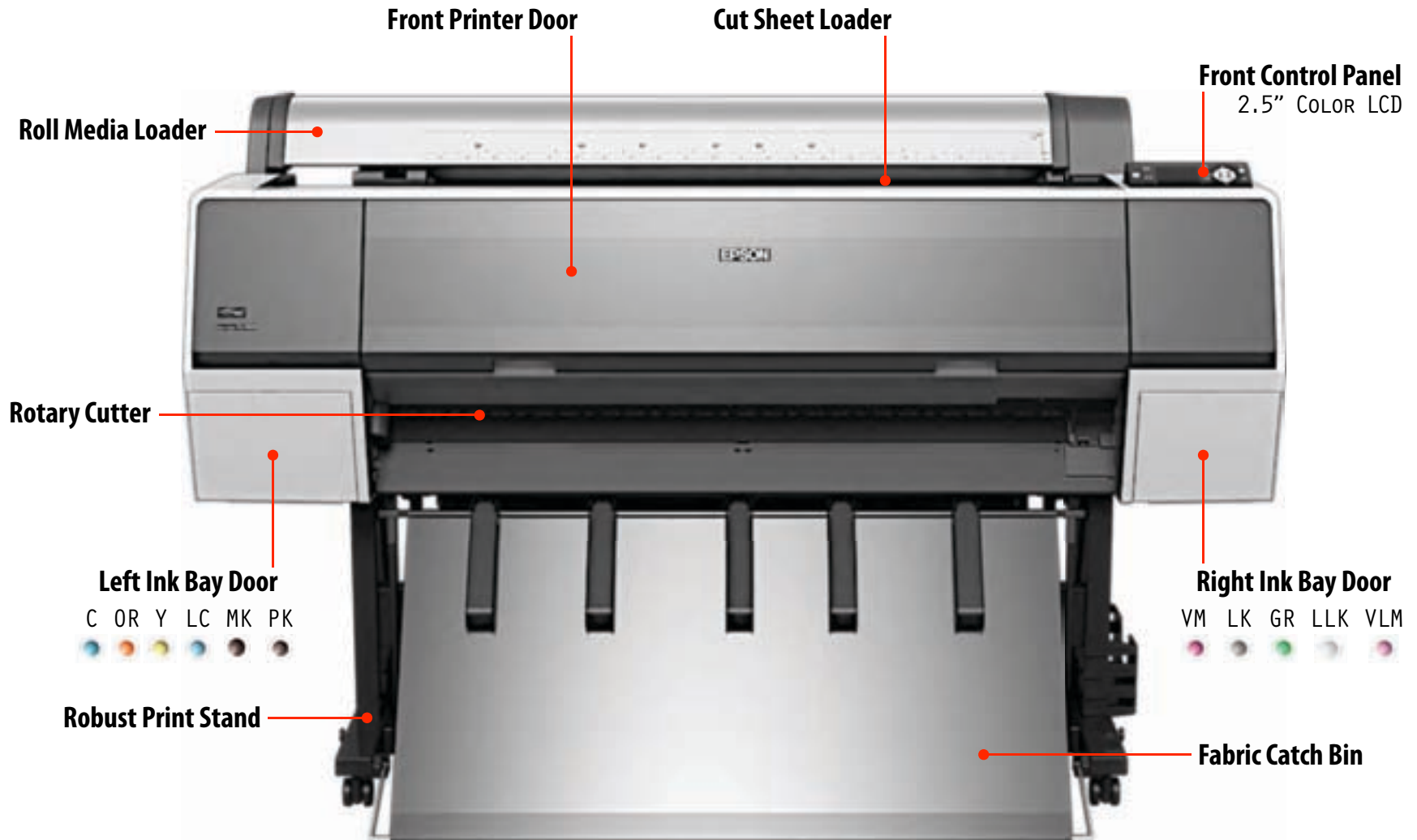
53.4"(W) x 26.3"(D) x 48"(H) | 186.3 LB.



44"

## Epson Stylus Pro 9900

73.4"(W) x 26.3"(D) x 48"(H) | 255.7 LB.



EPSON STYLUS PRO 9900 SHOWN

# Epson Stylus® Pro 9900

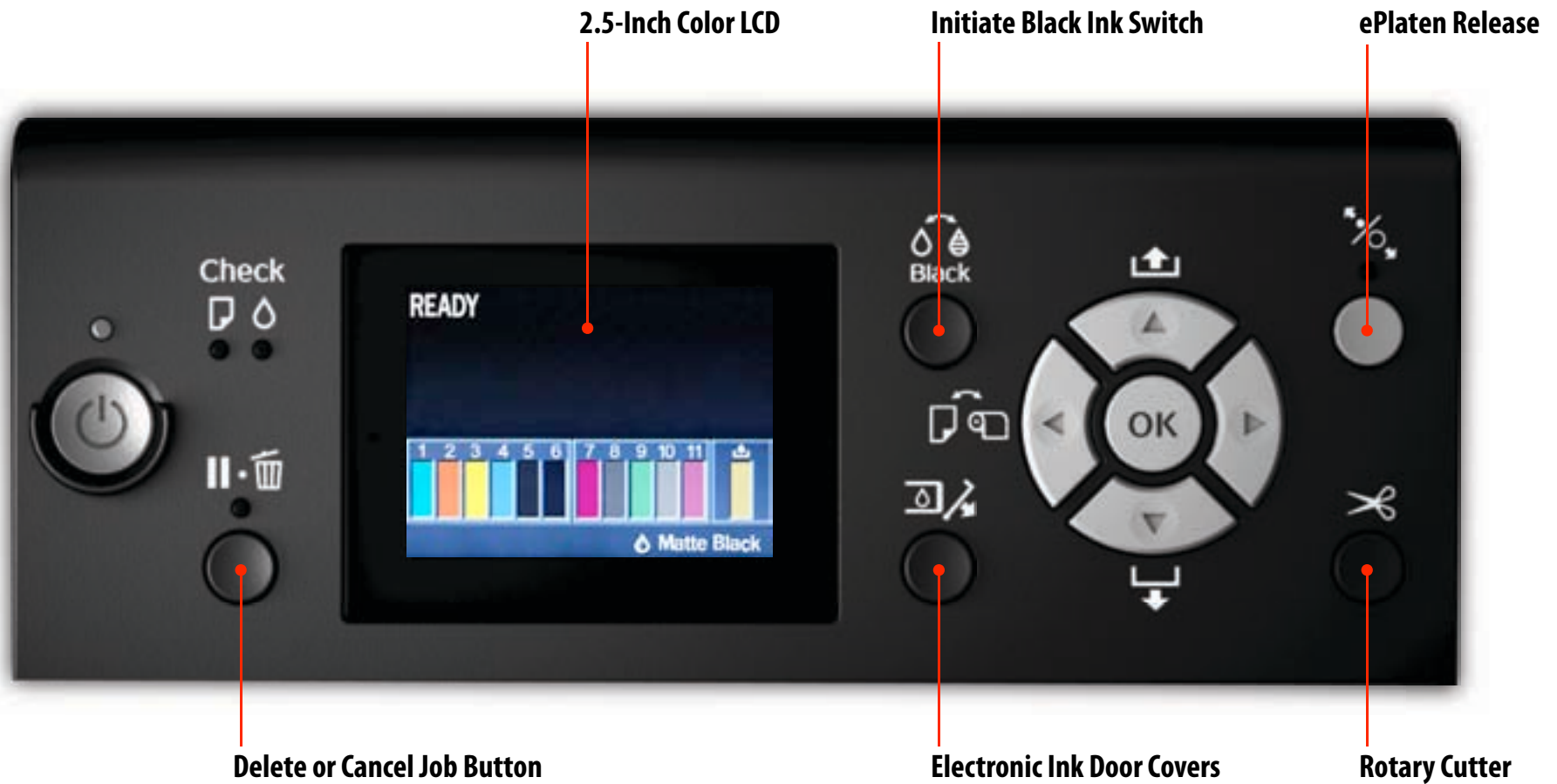
OPTIONAL ROLL MEDIA TAKE-UP REEL



**Auto Take-up Reel System**

UP TO 44-INCH WIDE

NOTE: CAN BE INSTALLED ALONG WITH THE OPTIONAL EPSON SPECTROPROOFER™ 44



- **Optional 24- and 44-Inch Wide Spectrophotometer Developed Jointly with X-Rite**
  - Simple installation fits cleanly into the front of the Epson Stylus Pro 7900 or 9900 printers
  - Includes both black and white interchangeable backing plates
  - Built-in print dryer to accelerate the dry-down and reading process
  - Built-in temperature sensors for internal mechanism and surrounding environment
- **Both UV and Non UV Versions Available**
  - When purchasing any Epson SpectroProofer option, the user selects either UV or non UV versions
- **Incorporates an X-Rite ILS20 device for High-Performance with High-Accuracy**
  - The X-Rite ILS20 uses a high-accuracy spectrum filter tungsten lamp for extreme measurement accuracy below 0.2 dE94
  - Capable of reading 15 color patches per sec per scan line
- **Supported by the Leading Software RIP Companies**
  - When driven by the latest software RIP front-ends, the Epson SpectroProofer can automate virtually any color management process in your workflow

**Epson SpectroProofer 44**

AVAILABLE FOR BOTH THE SP7900 OR SP9900  
(UV AND NON-UV VERSIONS ARE AVAILABLE)

POWERED BY A NEW HIGH-PERFORMANCE  
ILS20 SPECTROPHOTOMETER  
DEVELOPED BY X-RITE



EPSON SPECTROPROOFER 24	\$1,495
EPSON SPECTROPROOFER 24 UV	\$1,495
<hr/>	
EPSON SPECTROPROOFER 44	\$2,495
EPSON SPECTROPROOFER 44 UV	\$2,495

CONTACT YOUR LOCAL RESELLER FOR THE LATEST PRICING INFORMATION.  
(PRICING SHOWN IS MSRP)



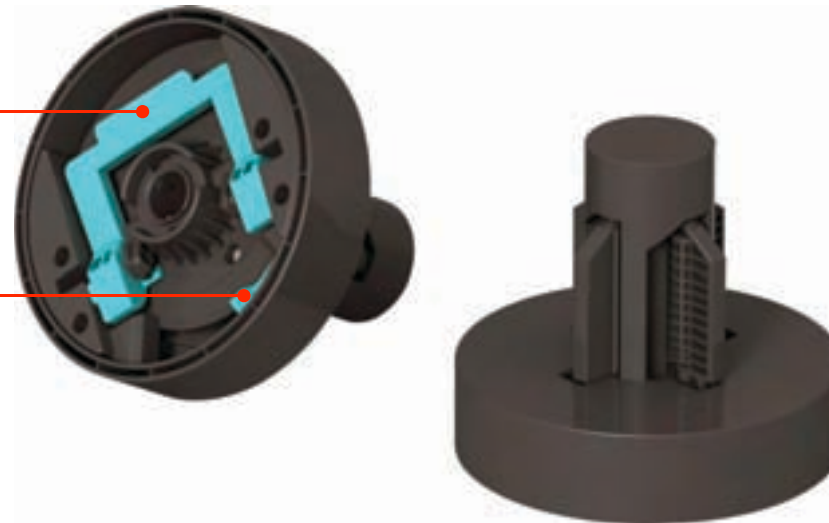
# All New Spindle-Free Roll Media Loading

HIGH-ACCURACY ROLL MEDIA LOADING SYSTEM

- **Roll Media Adapters Adjust for both 2– and 3–inch Media Cores**
- **Simple Tension Lever Ensures Quick and Secure Media Core Loading**
- **Extremely Fast Roll Media Loading with Less Chance of Media Damage**
- **Designed with Epson ePlaten™ Technology for Highly-Accurate Roll Media Loading**

Media Core Tension Lever

2– or 3–Inch Media Core Switch



EPSON



## All New Epson ePlaten™ Technology

HIGH-ACCURACY ROLL MEDIA LOADING SYSTEM

- **Accurate Automatic Media Loading, Movement, Skew Adjustment, and Tracking**
- **Electronically Controlled Roll Media Back Tension**
- **Automatic Media Core Rewind Upon Media Release**
- **Simplifies the Overall Roll and Cut Sheet Media Loading Process**





# Roll Media Length Tracking and Identification System

AUTOMATIC BAR CODE TRACKING SYSTEM

- **Realtime Automatic Remaining Roll Media Length Counter**
- **Auto Bar Code Printing of Remaining Roll Media Information for Faster Reloading**
- **Adjustable Roll Media Length Setting to Compensate for Various Roll Lengths**
- **Very Useful for Tracking Partially Used Media Rolls**
- **Auto Roll Media Identification – Both Genuine Epson and Custom Media Setting(s)**
- **Can Be Disabled if Not Required by Your Workflow**



EXAMPLE BAR CODE TAG PRINTED ON THE EDGE OF MEDIA



# New High Performance Rotary Cutting System

## ▶ All New Rotary Type Cutting Mechanism

- Extremely durable design and virtually maintenance free
- Off-carriage cutting system eliminates media dust within critical components

## ▶ High Performance Cutting Speeds

- Capable of cutting a 44-inch wide sheet in less than two seconds

## ▶ Cuts Virtually Any Media Type

- Capable of cutting all standard Epson roll media types, including canvas and various fine art papers

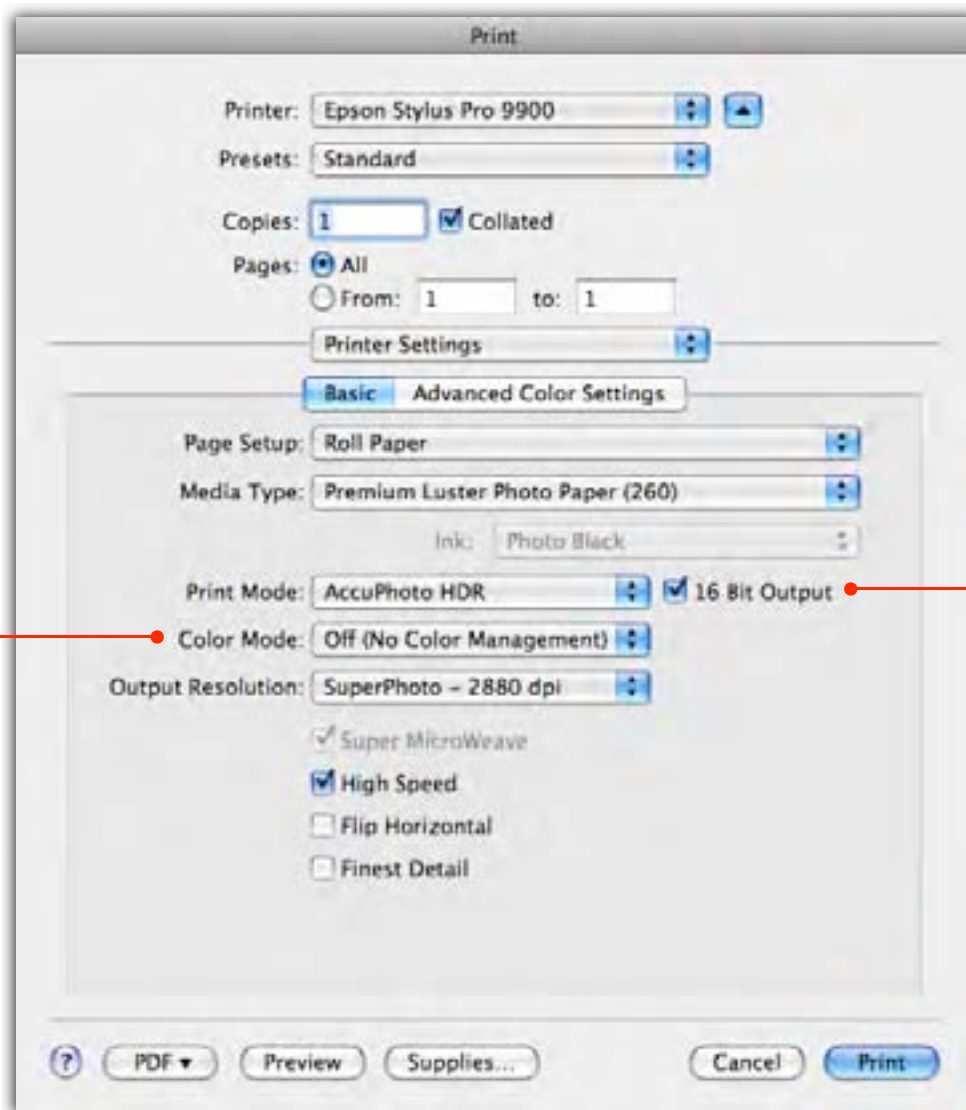


ALL-NEW HIGH-PERFORMANCE ROTARY CUTTER



# New Professional Photographic Driver Technology

IMPROVED MACINTOSH® AND WINDOWS® DRIVERS



## Auto Color Management Settings

ADOBE® PHOTOSHOP® CS3  
OR NEWER

## Process 16 Bit Data

ONLY MACINTOSH OS 10.5  
OR HIGHER

APPLE® MACINTOSH OS X (LEOPARD) DRIVER DIALOG SHOWN





# Warranty and Service Program

WORLD CLASS SERVICE AND SUPPORT

## ➤ **Standard One-Year of Coverage under the Epson Preferred<sup>SM</sup> Protection Plan**

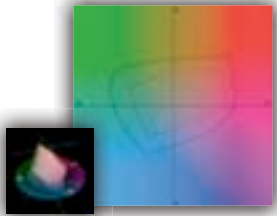
- Toll-free telephone support Monday thru Friday with usually next-business-day on-site service
- Protection plans provide limited warranty for parts and labor

## ➤ **Optional One- and Two-Year Extended Service Plans**

- The Epson Preferred Plus Service Plans extends the one-year limited warranty that comes standard



**EPSON**

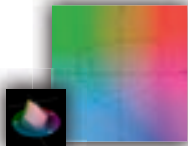


# Introducing **Epson UltraChrome<sup>®</sup> HDR Ink**

A Next Generation Pigment Ink Technology



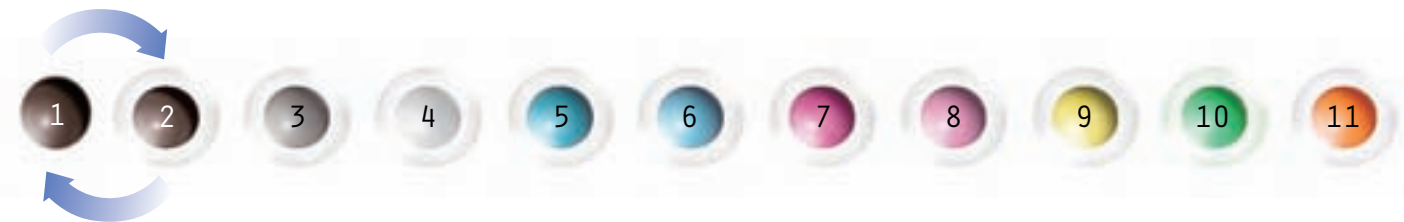
EPSON



# Epson UltraChrome® HDR Ink Technology

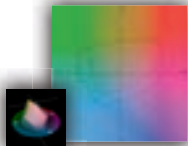
A NEXT GENERATION PIGMENT INK TECHNOLOGY

- **Unique High Dynamic Range (HDR) Pigments for an Extreme Color Gamut**
- **Ten-Color Printing System Including All-New Orange and Green Inks**
- **Designed to Work with Epson AccuPhoto™ HDR Screening Technology**
- **Professional Print Permanence Ratings**
- **Outstanding Short-term Color Stability for Mission Critical Color Proofing**
- **Improved Microcrystal Encapsulation™ Technology for Reduced Gloss Differential**
- **Improved Black Density up to 2.6 with an L\* value of ~3.0**



USER VERIFIED SWITCHING BETWEEN PHOTO AND MATTE BLACK INKS (11 INKS INSTALLED)  
MIX & MATCH INK CARTRIDGE SIZES INCLUDING 150ML, 350ML, AND/OR 700ML (ML ARE FILL VOLUME)  
D<sub>MAX</sub> AND L\* VALUES BASED ON EPSON PREMIUM LUSTER PHOTO PAPER (260)

EPSON



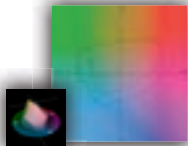
# Epson AccuPhoto™ HDR Screening

ALL NEW ADVANCED ALGORITHM TECHNOLOGY

- **Advanced Ten-Color Screening Algorithm Maximizing Color Gamut and Clarity**
- **Produces Extremely Fine Blends and Photographic Transitions**
- **Highly Accurate Highlight-to-Shadow Details**
- **No Visible Photographic Graininess Resulting from the Printing Process**
- **Ensures Consistent Color Balance Under Various Viewing Light Sources**
- **When Combined with the Precise Dot Placement Accuracy of the Epson MicroPiezo TFP Print Head, Overall Print Quality is Significantly Improved**



EPSON ACCUPHOTO HDR SCREENING TECHNOLOGY WAS DEVELOPED THROUGH FUNDAMENTAL RESEARCH CONDUCTED JOINTLY WITH THE MUNSELL COLOR SCIENCE LABORATORY AT THE ROCHESTER INSTITUTE OF TECHNOLOGY.



# Epson UltraChrome® HDR Ink Technology

THREE-LEVEL BLACK INK TECHNOLOGY

- **Simultaneously uses Black, Light Black, and Light Light Black inks**
- **Significantly improves the gray balance, while eliminating color casting**
- **Impressive shadow-to-highlight detail for a perfect tonal range**
- **Eliminates the metamerism and bronzing of basic pigment chemistry**
- **Enhances the ICC profiling process for ColorSync™ and ICM™ workflows**

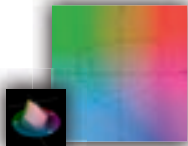
*“What’s amazing is the amount of control down in the shadow area as well up in the highlight area and through the middle range...for total control.”*

**Chris Rainier**

PHOTOGRAPH © 2008 CHRIS RAINIER  
ANCIENT MARKS EXHIBITION



EPSON



# Epson UltraChrome® HDR Ink Technology

ADVANCED BLACK AND WHITE PRINTING TECHNOLOGY

- ▶ **Unique driver technology taking full advantage of our three-level black system to produce professional black and white prints from color or monochrome images**
- ▶ **Proprietary Epson screening developed specifically for black and white printing**
- ▶ **This technology has already produced some of the world's best black and white prints**

Cool



Neutral

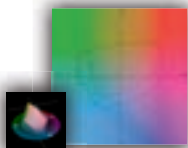


Warm



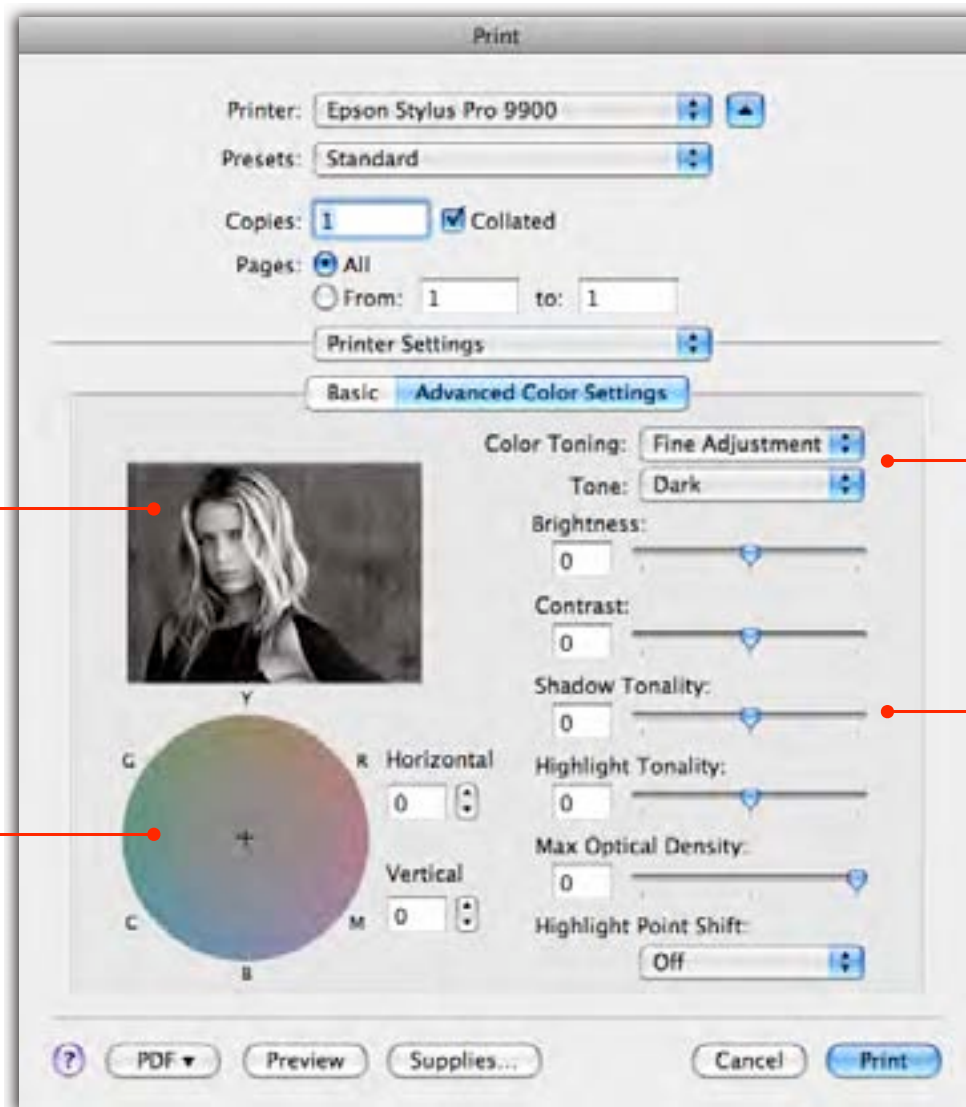
PHOTOGRAPH © 2008 GREG GORMAN

EPSON



# Epson UltraChrome® HDR Ink Technology

ADVANCED BLACK AND WHITE PRINTING TECHNOLOGY



Simulated Feedback

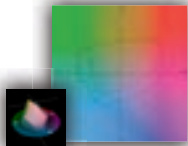
Precise Tone Control

Quick Toning Presets

Complete Tonality Control

APPLE® MACINTOSH OS X (LEOPARD) DRIVER DIALOG SHOWN





# Epson UltraChrome® HDR Ink Technology

DUAL BLACK INK MODES – PHOTO AND MATTE BLACK INKS

- **Two different black ink technologies can be used to optimize the black density for virtually any media type**
- **Photo Black ink can produce professional results on any media type, but is optimized for traditional photographic inkjet papers**
- **Matte Black ink can produce even better results on specific matte-type papers such as Epson Velvet Fine Art, Enhanced Matte, UltraSmooth Fine Art, and many others**

MATTE BLACK PRINT ON MATTE PAPER



PHOTO BLACK PRINT ON MATTE PAPER



PHOTOGRAPH © 2008 LOIS GREENFIELD

EPSON



# Print Permanence Ratings

[WWW.WILHELM-RESEARCH.COM](http://WWW.WILHELM-RESEARCH.COM)

EPSON



# Professional Print Permanence Ratings

STANDARD DISPLAY CONDITIONS – FRAMED UNDER GLASS

## MOST POPULAR MEDIA TYPES

Epson Media Type	Color Rating <sup>1</sup>	Black and White Rating <sup>1</sup>
Epson Premium Glossy Photo Paper (250)	85 Years	> 200 Years
Epson Premium Luster Photo Paper (260)	83 Years	> 315 Years
Epson Premium Semimatte Photo Paper (260)	83 Years	> 200 Years
Epson Premium Semigloss Photo Paper (250)	83 Years	> 315 Years
Epson Exhibition Fiber Paper	90 Years	> 200 Years
Epson UltraSmooth™ Fine Art Paper	108 Years	> 205 Years
Epson Velvet Fine Art Paper	61 Years	> 406 Years
Epson Enhanced Matte Paper	82 Years	> 110 Years
Epson Premium Canvas – Satin	75 Years	> 105 Years

<sup>1</sup> Permanence ratings are based on accelerated testing of prints made on specialty media, displayed indoors, under glass (Standard Display Condition) or UV filter (Professional Display Conditions). Actual print stability will vary according to media, printed image, display conditions, light intensity, humidity, and atmospheric conditions. Epson does not guarantee longevity of prints. For maximum print life, display all prints under glass, UV filter, lamination or properly store them.

PRELIMINARY DATA | STILL UNDER TESTING

SEE [WWW.WILHELM-RESEARCH.COM](http://WWW.WILHELM-RESEARCH.COM) FOR THE LATEST INFORMATION

EPSON



# Professional Print Permanence Ratings

PROFESSIONAL DISPLAY CONDITIONS – FRAMED UNDER UV GLASS

## MOST POPULAR MEDIA TYPES

<b>Epson Media Type</b>	<b>Color Rating<sup>1</sup></b>	<b>Black and White Rating<sup>1</sup></b>
<b>Epson Premium Glossy Photo Paper (250)</b>	<b>98 Years</b>	<b>&gt; 250 Years</b>
<b>Epson Premium Luster Photo Paper (260)</b>	<b>&gt; 200 Years</b>	<b>&gt; 315 Years</b>
<b>Epson Premium Semimatte Photo Paper (260)</b>	<b>&gt; 200 Years</b>	<b>&gt; 250 Years</b>
<b>Epson Premium Semigloss Photo Paper (250)</b>	<b>&gt; 200 Years</b>	<b>&gt; 315 Years</b>
<b>Epson Exhibition Fiber Paper</b>	<b>&gt; 150 Years</b>	<b>&gt; 200 Years</b>
<b>Epson UltraSmooth™ Fine Art Paper</b>	<b>175 Years</b>	<b>&gt; 395 Years</b>
<b>Epson Velvet Fine Art Paper</b>	<b>125 Years</b>	<b>&gt; 406 Years</b>
<b>Epson Enhanced Matte Paper</b>	<b>110 Years</b>	<b>&gt; 110 Years</b>
<b>Epson Premium Canvas – Satin</b>	<b>132 Years</b>	<b>&gt; 150 Years</b>

<sup>1</sup> Permanence ratings are based on accelerated testing of prints made on specialty media, displayed indoors, under glass (Standard Display Condition) or UV filter (Professional Display Conditions). Actual print stability will vary according to media, printed image, display conditions, light intensity, humidity, and atmospheric conditions. Epson does not guarantee longevity of prints. For maximum print life, display all prints under glass, UV filter, lamination or properly store them.

PRELIMINARY DATA | STILL UNDER TESTING

SEE [WWW.WILHELM-RESEARCH.COM](http://WWW.WILHELM-RESEARCH.COM) FOR THE LATEST INFORMATION

EPSON



# Epson MicroPiezo TFP™ Print Head Technology

THE WORLD'S MOST ADVANCED INKJET PRINT HEAD TECHNOLOGY

EPSON



# Epson MicroPiezo TFP Print Head Technology

EPSON STYLUS PRO 7900/9900 SERIES

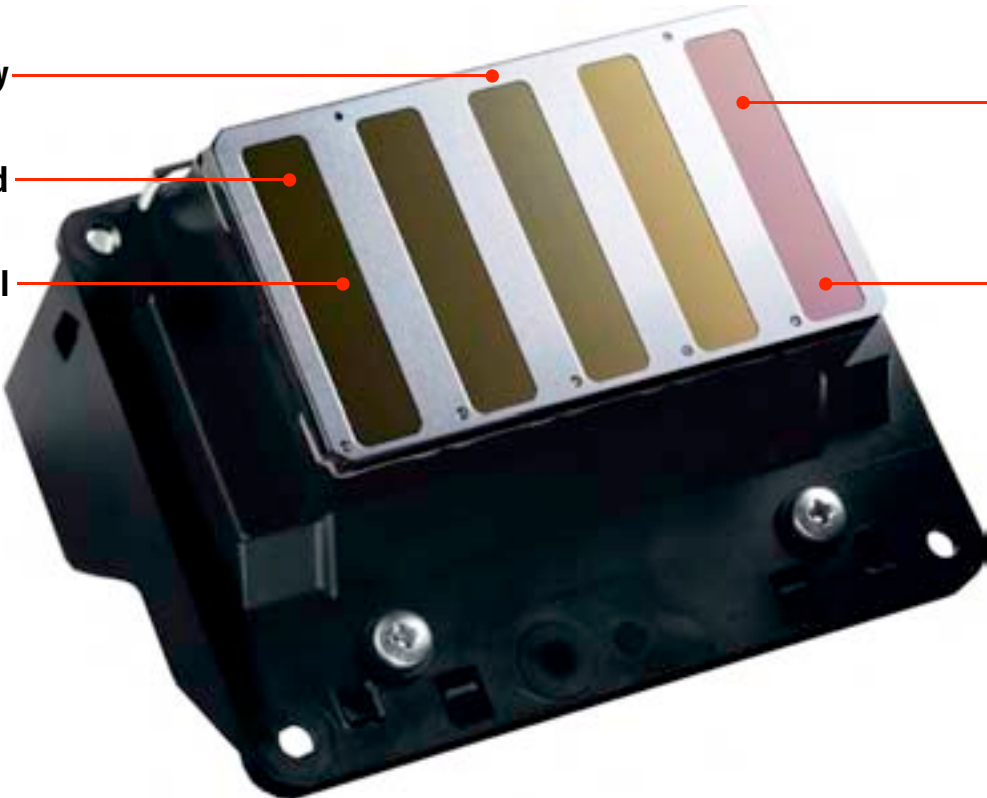
**10-Channel Print Head Technology**

**One-Inch Wide Print Head**

**Auto-Sharing Black Channel**

**Ink Repelling Coating Technology**

**360 Nozzles Per Inch**



VARIABLE DROPLET PIEZO | ADVANCED THIN FILM PIEZO (TFP) | 360 NOZZLES x 10 CHANNELS | 3.5 PICOLITERS

EPSON STYLUS PRO 7900/9900 SERIES





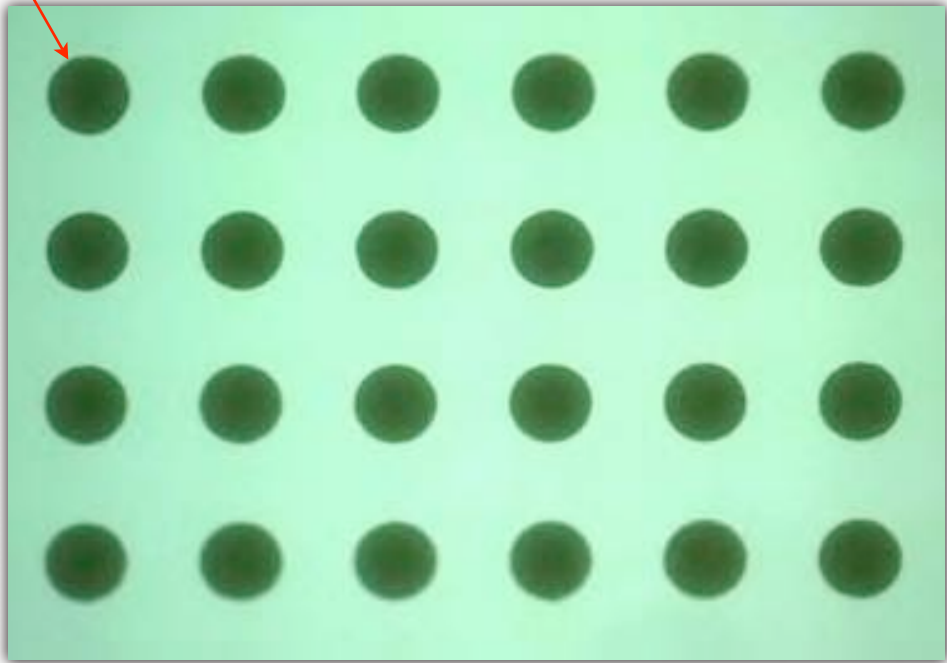
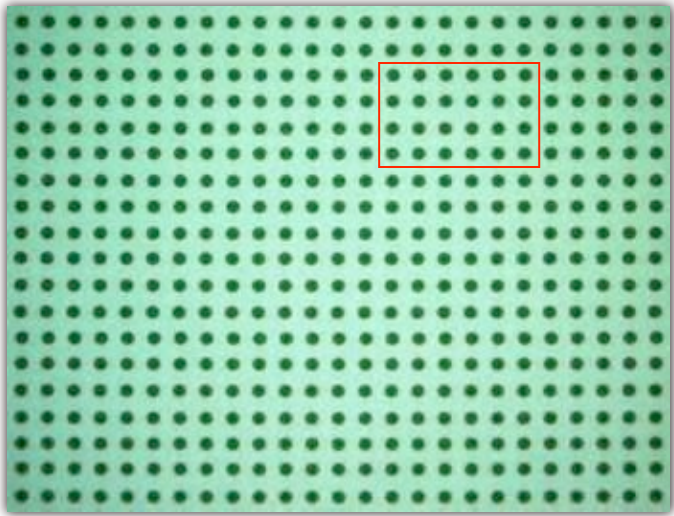
# Epson MicroPiezo TFP Print Head Technology

THE WORLD'S MOST ADVANCED INKJET PRINT HEAD TECHNOLOGY

Actual Ink Droplet on Paper

~ 1,420X MAGNIFICATION

~ 210X MAGNIFICATION



← PRINT HEAD DIRECTION →

**Extreme Dot Placement Accuracy**

**Perfectly Round & Consistent Droplets**

LOW VIBRATION MENISCUS AND HIGH IMPACT CONTROL TECHNOLOGY EXAMPLES SHOWN ABOVE

SOURCE: SEIKO EPSON ENGINEERING





# Epson MicroPiezo TFP Print Head Technology

USER VERIFIED AUTOMATIC BLACK INK MODE SWITCHING

- **Epson MicroPiezo TFP print head technology allows the printer to share the same physical ink channel between both Matte and Photo Black inks**
- **The correct black ink mode is automatically used depending upon the printer driver or front control panel settings**
- **The process of switching between black ink modes is automatic**
- **To reduce user errors, the user must confirm the switch at the front control panel**
- **This technology is similar to the auto-switching process of the Epson Stylus Pro 3800**

<b>Black Ink Conversion</b>	<b>Conversion Time</b>	<b>Ink Used</b>
Photo Black to Matte Black	~2:07 min:sec	~1.13 ml
Matte Black to Photo Black	~2:55 min:sec	~3.34 ml



# Performance Benchmarking

EPSON STYLUS PRO 7900 - 24"

EPSON STYLUS PRO 9900 - 44"

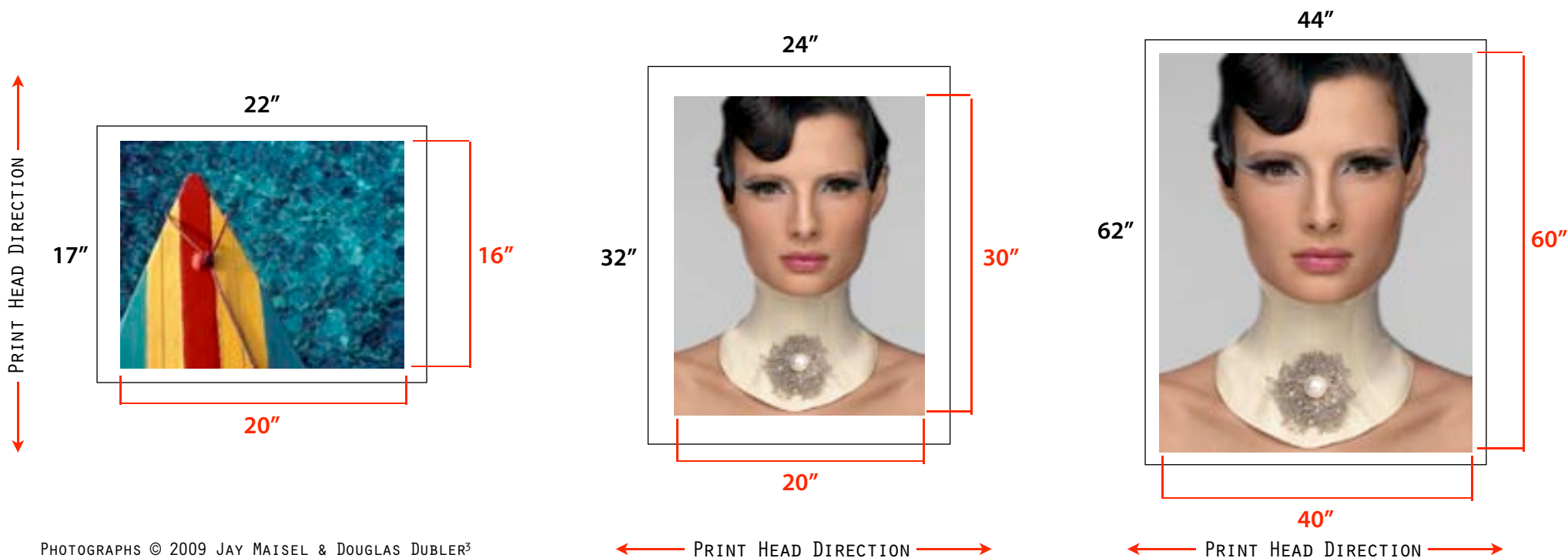


# Performance Benchmarking

MOST POPULAR PRINT SIZES

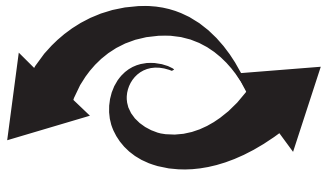
Epson Driver Print Mode	16" x 20"	20" x 30"	40" x 60"
Fine - 720 dpi HS	2:53	5:03	15:26
SuperFine - 1440 dpi HS	3:47	6:39	24:20
SuperPhoto - 2880 dpi HS	7:14	12:52	40:05

BASED UPON PRINT ENGINE SPEEDS ONLY. TOTAL THROUGHPUT TIMES DEPEND UPON FRONT-END DRIVER/RIP, FILE SIZE, PRINTER RESOLUTION, INK COVERAGE, ETC. IMAGES PRINTED AS SHOWN BELOW ON EPSON PREMIUM LUSTER PHOTO PAPER 260 USING A STANDARD ICC COLOR MANAGED WORKFLOW VIA ADOBE® PHOTOSHOP® CS3 PRINT SPEEDS ARE SHOWN IN MIN:SEC | HS = HIGH-SPEED MODE (BI-DIRECTIONAL PRINT MODE)



PHOTOGRAPHS © 2009 JAY MAISEL & DOUGLAS DUBLER<sup>3</sup>





PUBLIC BETA

# Introducing **myEpsonPrinter.com**

A REALTIME WEB-BASED PRINTER INFORMATION SYSTEM

EPSON



**“The myEpsonPrinter.com web site, allows our customers to securely automate and track their entire line of Epson Stylus Pro printers. The days of trying to manually track printing expenses are over. The myEpsonPrinter.com website will allow print shops to use a single system to better understand and control their overall printing expenses.”**

REED HECHT | EPSON AMERICA



- **Advanced Web-Based Printer Information and Management System**
- **Automatically Track Consumables Usage per Printer, Regardless of Location**
- **Provides Real Time Cost-per-Print Estimates and Print-job-Run Information**
- **Create Various Custom Reports Using Actual Print Job Information**
- **Easy Access to Technical Support Information, Including Printer Firmware and Driver Updates, Real Time Warranty Information, and Much More**
- **Provides Remote Monitoring and Remote Printer Alert Capability for Superior Fleet-Wide Printer Management**
- **Highly Secure Information Management Using the Latest Encryption Technologies**
- **The myEpsonPrinter.com Service is FREE During the Public Beta Period**
- **Estimated Public Beta Period is August 2008 thru March 2009**
- **At the Conclusion of the Public Beta Period, Additional Fees May Apply to Continue**

The screenshot displays the myEpsonPrinter.com web interface. At the top, there is a navigation bar with links for Home, Printers, Reports, Support, Ink & Paper, Cost Settings, Account Settings, Help, and Logout. Below this is a sub-header for 'Printers - Printer Overview' showing the currently selected printer as 'Epson Stylus Pro 11880, ACTIVE' and a dropdown menu to 'Select Another Printer: Epson Stylus Pro 11880,11880 (SNW)'. The main content area is divided into several sections: 'Ink Levels' with virtual ink level indicators for various colors (Vivid Light Magenta, Light Light Black, Matte Black, Light Black, Light Cyan, Cyan, Vivid Magenta, Matte Black, Yellow) and 'Maintenance Tank Levels' for three tanks. A 'Recent Alerts' section shows a warning icon and a table of alerts. Below that is a 'Printer Summary' section with printer details and a warranty progress bar. The bottom section is 'Job Activity' with a table of print jobs and a search function.

**Fleet-Wide Printer Management**

MANAGE MULTIPLE STYLUS PRO PRINTERS OR GROUPS OF PRINTERS FROM THIS SIMPLE PULL-DOWN MENU

**Ink and Maintenance Tank Levels**

VIEW CONSUMABLES INFORMATION IN VIRTUAL REALTIME FOR ANY PRINTER OR GROUPS OF PRINTERS

**Realtime Alerts**

VIEW VARIOUS PRINTER AND MAINTENANCE ALERTS

**Easy Access to Printer Model and Warranty Status Information**

VIEW IMPORTANT PRINTER AND WARRANTY STATUS INFORMATION

**Detailed Job Activity Information**

QUICKLY VIEW THE LATEST PRINT JOB INFORMATION

The screenshot displays the 'Printers - Job Details' page for an Epson Stylus Pro G5000. It includes navigation tabs (Home, Printers, Reports, Support, Ink & Paper, Cost Settings, Account Settings, Help | Logout) and a printer overview section with buttons for 'PREVIOUS JOB', 'NEXT JOB', and 'BACK TO JOB ACTIVITY'. The main content area is divided into several sections:

- Job Information:** Filename: Lamba\_Hood.tif, User Name: epson, Print Time: 00 hrs: 48 min: 11 sec. Job Status: Completed.
- Media Details\*:** Media Type: Avary MD1005E2 (with a 'CHANGE MEDIA' button), Paper Format: roll, Number of Pages: 1, Paper Size: 60.0" x 150.0", Print Size: 74.76" x 4.98", Total Amount of Media Consumed: 31.05 sq ft.
- Ink Details\*:** A table listing ink consumption for various colors: Orange (0.756 ml), Green (0.72 ml), Light Magenta (7.992 ml), Light Cyan (4.600 ml), Black (12.996 ml), Yellow (10.824 ml), Magenta (19.656 ml), Cyan (7.788 ml), and Total Amount of Ink (65.34 ml).
- Job Accounting:** A table showing cost estimates: Ink Cost\* (\$16.30), Media Cost\* (\$37.22), Additional Job Expense (\$0.00), Additional Job Expense at \$0.00 per page (\$0.00), Margin at 0% (\$0.00), and Sales Tax Rate (0.0%) (\$0.00).
- Additional Job Information:** Fields for Client/Customer/PO Number and Notes.

**Detailed Print Job Information**

ACCESS TO DETAILED PRINT JOB INFORMATION

**Automatic Print Cost Estimates**

DETAILED FINANCIAL INFORMATION FOR COST ACCOUNTING. YOU INPUT YOUR COST INFORMATION FOR INK, MEDIA, SALES TAX RATE, ETC., AND WE'LL AUTOMATICALLY ESTIMATE YOUR TOTAL INDIVIDUAL PRINT JOB COSTS.

Reports

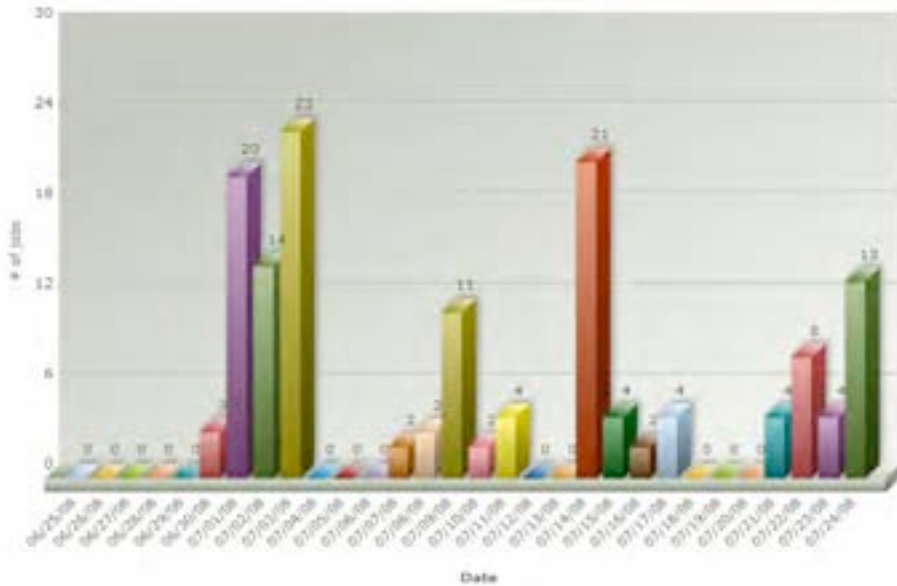


Current Selected Printer Group:  
All Printers

\* Quantities and costs of ink and media used are Epson estimates only. [Click here](#) for important details about these estimates.

Total Jobs Printed from 6/25/08 to 7/24/08

Total Jobs Printed from  
06/25/08 to 07/24/08



**Powerful Reporting and Graphing Capability**

CREATE UP TO 17 DETAILED GRAPHS ON VIRTUALLY ANY DATA POINT INCLUDING CONSUMABLES USAGE, PRINT JOBS, BILLABLE DOLLARS, AND MUCH MORE.

GRAPH BY BAR, LINE, PIE, ETC.



# Competitive Benchmarking

EPSON STYLUS PRO 7900/9900 SERIES  
VERSUS EPSON STYLUS PRO 7880/9880/11880 SERIES

EPSON

Printer Feature	Epson Stylus Pro 7900	Epson Stylus Pro 7880
Maximum Printer Width	24-Inch	24-Inch
Pigment Ink Technology	Epson UltraChrome® HDR	Epson UltraChrome® K3 Vivid Magenta
Print Head Technology	Epson MicroPiezo TFP™	Epson MicroPiezo AMC™
Auto Nozzle Verification and Cleaning?	Yes	No
Ink Repelling Coating Technology?	Yes	Yes
Printing Color Model	10-Color	8-Color
Number of Print Head Nozzles	360 x 10 Colors	180 x 8 Colors
Ink Included with Printer	110 ml x 11 Ink Cartridges	110 ml x 8 Ink Cartridges
Maximum Ink Cartridge Size	700 ml x 11 Ink Cartridges	220 ml x 8 Ink Cartridges
Ink Cartridge Sizes Available	150 ml / 350 ml / 700 ml	110 ml / 220 ml
Maximum Resolution / Smallest Droplet Size	2880 x 1440 / 3.5 pl	2880 x 1440 / 3.5 pl
Photographic Driver Screening Technology	Epson AccuPhoto™ HDR	Epson AccuPhoto™ HD
Epson ePlaten Technology?	Yes	No
Auto-Switching Black Ink Technologies?	Yes	No
Thick Media Cutting System	Internal Automatic Rotary Cutter	Optional Manual Media Cutting System
Internal Color Measuring Capability?	Optional SpectroProofer 24 (UV or non UV)	None
myEpsonPrinter.com Compatible?	Yes	Yes
Standard Connectivity	USB 2.0 & 10/100 BaseT Ethernet	USB 2.0 & 10/100 BaseT Ethernet
Standard Warranty	1-Year Epson Preferred Protection Plan	1-Year Epson Preferred Protection Plan
MSRP	\$3,995	\$2,995

WINNING FEATURE

EPSON

Printer Feature	Epson Stylus Pro 9900	Epson Stylus Pro 9880
Maximum Printer Width	44-Inch	44-Inch
Pigment Ink Technology	Epson UltraChrome® HDR	Epson UltraChrome® K3 Vivid Magenta
Print Head Technology	Epson MicroPiezo TFP™	Epson MicroPiezo AMC™
Auto Nozzle Verification and Cleaning?	Yes	No
Ink Repelling Coating Technology?	Yes	Yes
Printing Color Model	10-Color	8-Color
Number of Print Head Nozzles	360 x 10 Colors	180 x 8 Colors
Ink Included with Printer	110 ml x 11 Ink Cartridges	110 ml x 8 Ink Cartridges
Maximum Ink Cartridge Size	700 ml x 11 Ink Cartridges	220 ml x 8 Ink Cartridges
Ink Cartridge Sizes Available	150 ml / 350 ml / 700 ml	110 ml / 220 ml
Maximum Resolution / Smallest Droplet Size	2880 x 1440 / 3.5 pl	2880 x 1440 / 3.5 pl
Photographic Driver Screening Technology	Epson AccuPhoto™ HDR	Epson AccuPhoto™ HD
Epson ePlaten Technology?	Yes	No
Auto-Switching Black Ink Technologies?	Yes	No
Thick Media Cutting System	Internal Automatic Rotary Cutter	Optional Manual Media Cutting System
Internal Color Measuring Capability?	Optional SpectroProofer 44 (UV or non UV)	None
myEpsonPrinter.com Compatible?	Yes	Yes
Standard Connectivity	USB 2.0 & 10/100 BaseT Ethernet	USB 2.0 & 10/100 BaseT Ethernet
Standard Warranty	1-Year Epson Preferred Protection Plan	1-Year Epson Preferred Protection Plan
MSRP	\$5,995	\$4,995

WINNING FEATURE

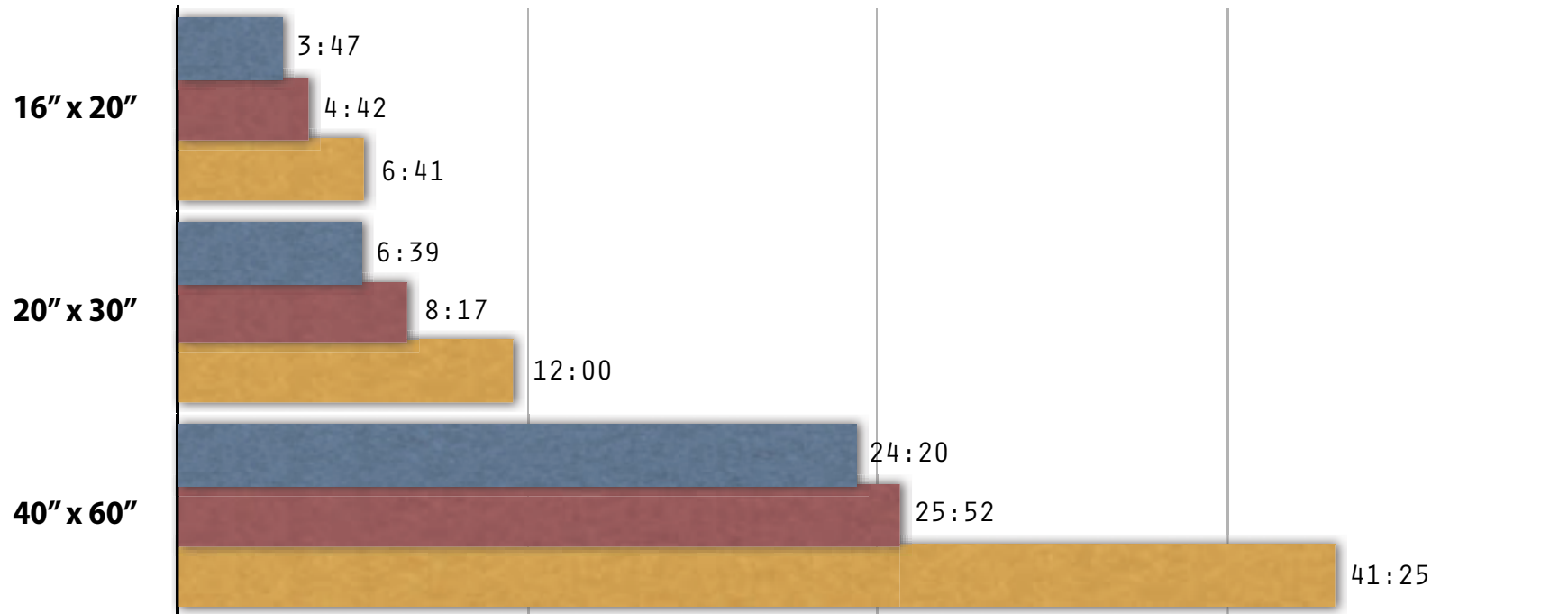
EPSON

Printer Feature	Epson Stylus Pro 9900	Epson Stylus Pro 11880
Maximum Printer Width	44-Inch	64-Inch
Pigment Ink Technology	Epson UltraChrome® HDR	Epson UltraChrome® K3 Vivid Magenta
Print Head Technology	Epson MicroPiezo TFP™	Epson MicroPiezo TFP™
Auto Nozzle Verification and Cleaning?	Yes	Yes
Ink Repelling Coating Technology?	Yes	Yes
Printing Color Model	10-Color	8-Color
Number of Print Head Nozzles	360 x 10 Colors	360 x 9 Colors
Ink Included with Printer	110 ml x 11 Ink Cartridges	110 ml x 9 Ink Cartridges
Maximum Ink Cartridge Size	700 ml x 11 Ink Cartridges	700 ml x 9 Ink Cartridges
Ink Cartridge Sizes Available	150 ml / 350 ml / 700 ml	700 ml
Maximum Resolution / Smallest Droplet Size	2880 x 1440 / 3.5 pl	2880 x 1440 / 3.5 pl
Photographic Driver Screening Technology	Epson AccuPhoto™ HDR	Epson AccuPhoto™ HD
Epson ePlaten Technology?	Yes	No
Auto-Switching Black Ink Technologies?	Yes – Black Ink Channel Sharing	Yes – Dedicated PK & MK Channels
Thick Media Cutting System	Internal Automatic Rotary Cutter	Internal Automatic Knife Blade
Internal Color Measuring Capability?	Optional SpectroProofer 44 (UV or non UV)	None
myEpsonPrinter.com Compatible?	Yes	Yes
Standard Connectivity	USB 2.0 & 10/100 BaseT Ethernet	USB 2.0 & 10/100/1000 BaseT Ethernet
Standard Warranty	1-Year Epson Preferred Protection Plan	1-Year Epson Preferred Protection Plan
MSRP	\$5,995	\$14,995

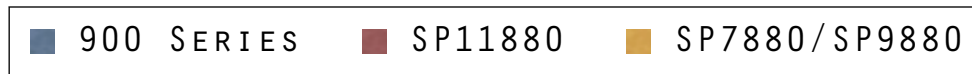
WINNING FEATURE

EPSON

SHORTER BARS ARE BETTER



BASED UPON 1,440 x 720 DPI HS PRINT ENGINE SPEEDS ONLY. TOTAL THROUGHPUT TIMES DEPEND UPON FRONT-END DRIVER/RIP, FILE SIZE, PRINTER RESOLUTION, INK COVERAGE, ETC. IMAGES PRINTED ON EPSON PREMIUM LUSTER PHOTO PAPER 260 VIA ADOBE® PHOTOSHOP® CS3  
PRINT SPEEDS ARE SHOWN IN MIN:SEC | HS = HIGH-SPEED MODE (BI-DIRECTIONAL PRINT MODE)



# Simple MSRP Pricing Comparison

	80 ml	110 ml	150 ml	220 ml	350 ml	700 ml
Ink Cartridge MSRP	\$59.95	\$69.95	\$89.95	\$112	\$159.95	\$279.95
MSRP-per-ML	\$0.75 ml	\$0.64 ml	\$0.60 ml	\$0.51 ml	\$0.46 ml	\$0.40 ml
Epson Stylus Pro 3800	✓					
Epson Stylus Pro 4880 / 7880 / 9880		✓		✓		
Epson Stylus Pro 7900 / 9900			✓		✓	✓
Epson Stylus Pro 11880						✓

\*THIS SIMPLE MSRP PER ML COMPARISON DOES NOT NECESSARILY REFLECT THE ACTUAL COST OF INK FOR A PARTICULAR PRINT, WHICH CAN VARY DEPENDING UPON SOFTWARE USED, IMAGE PRINTED, PRINT SETTINGS, MEDIA TYPE, FREQUENCY OF PRINTER USE AND OTHER FACTORS.  
ALL INK CARTRIDGE SIZES ARE STATED AS FILL VOLUMES.

PRICING IS ESTIMATED AS OF 08.08.2008

